

# AVAILABLE INDUSTRIAL SITE

HICKS INDUSTRIAL PARK  
HICKS INDUSTRIAL PARK ROAD, UNION SPRINGS, BULLOCK, AL 36089



## Description

\$600,000 project creating one half mile paved corridor opens Hicks Industrial Park for business/industry occupancy. The park is accessible from U.S. Highways 82 and 29. 4" to 10" water line. 60 acres cleared.

## Sale / Lease

**For Sale:** Yes  
**Sale Price:** \$ 5,000.00 per acre  
**Pricing Information:** Land may be an incentive. Price of land negotiable; could be an incentive.

## Utilities

**Electric Provider:** Dixie Electric Co-op  
**Natural Gas Provider:** Union Springs Utility Board  
**Natural Gas Size of Main:** 4"  
**Water Provider:** Union Springs Utility Board  
**Water Size of Main:** 10"  
**Telecommunications Provider:** Union Springs Telephone  
**Fiber Available:** Yes  
**DSL Available:** Yes  
**Sewer Provider:**  
**Sewer Size of Main:** 12"

## Zoning

**Zoning:** Light Industrial

## Port

**Nearest Port:**  
**Dock Distance:** Port 26 to 50 miles

## Property Details

**Latitude:** 32.133600  
**Longitude:** -85.699900  
**Total Acreage:** 96 Acre(s)  
**Available Acres:** 35 Acre(s)  
**Largest Tract Available:** 35 Acre(s)  
**Smallest Tract Available:** 5 Acre(s)  
**Expandable:** No  
**Wetlands:**  
**Phase 1 Audit Done:** Yes

## Interstate/Highway

**Interstate:** I-85  
**To Interstate (miles):** 25.00 Mile(s)  
**Interstate #2:** I-65  
**To Interstate #2 (miles):** 45.00 Mile(s)  
**Highway:** 223  
**To Highway (miles):** On-Site

## Rail

**Carrier:**  
**Rail 1 Track Status:** Not Available  
**Rail 2 Track Status:** Not Available

## Alabama Advantages

- 6 Interstates converge in Alabama
- All communities within 2 hours of a commercial airport
- 92 public-use airports
- Five Class 1 railroads and multiple short line railroads
- Deep water port on the Gulf of Mexico
- One of the longest inland waterway systems
- Right-To-Work state

**WIN** with Alabama

For more information, please contact:

**Bullock County Development Authority**  
**David Padgett**  
(334) 473-8016  
david.padgett@bullockcountyalabama.com

**Economic Development Partnership of Alabama**  
1320 1st Avenue South  
Birmingham, AL 35233  
Greg Blalock  
Project Director  
P 205.943.4700  
gblalock@edpa.org  
<https://www.edpa.org>

# AVAILABLE INDUSTRIAL SITE

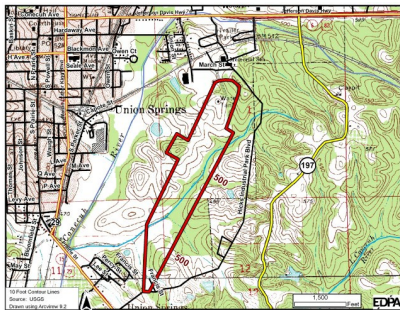
HICKS INDUSTRIAL PARK

HICKS INDUSTRIAL PARK ROAD, UNION SPRINGS, BULLOCK, AL 36089



## Alabama Advantages

- 6 Interstates converge in Alabama
- All communities within 2 hours of a commercial airport
- 92 public-use airports
- Five Class 1 railroads and multiple short line railroads
- Deep water port on the Gulf of Mexico
- One of the longest inland waterway systems
- Right-To-Work state



# WIN with Alabama

For more information, please contact:

Bullock County Development Authority  
David Padgett  
(334) 473-8016  
david.padgett@bullockcountyalabama.com

Economic Development Partnership of Alabama  
1320 1st Avenue South  
Birmingham, AL 35233  
Greg Blalock  
Project Director  
P 205.943.4700  
gblalock@edpa.org  
<https://www.edpa.org>