

AVAILABLE INDUSTRIAL SITE

BUTLER COUNTY INDUSTRIAL PARK



Highway 31 North, Greenville, Butler, AL, 36037

Sale / Lease

For Sale: Yes
Sale Price: \$ 6,000.00 per acre
Pricing Information: Contact: David Hutchison P.O. Box 758 Greenville, AL 36037 334-313-0341 cell / 334-371-8400 office.

Zoning

Zoning: None

Property Details

Latitude: 31.856000
Longitude: -86.588200
Total Acreage: 158 Acre(s)
Available Acres: 105 Acre(s)
Largest Tract Available: 45 Acre(s)
Smallest Tract Available: 9 Acre(s)
Expandable: Yes
Wetlands: Phase 1
Audit Done: Yes

Description

Industrial park roads and water tank (500,000 gallons) are in place. . Test holes have been drilled to a depth of 60 feet without encountering water. We would recommend other test pits be drilled based on the specific needs of your clients building.



For more information, please contact:

Butler County Commission for Economic Development
David Hutchison
(334) 371-8400
dhutchison@bcced.com

Economic Development Partnership of Alabama
1320 1st Avenue South
Birmingham, AL 35233
P 205.943.4700
gblalock@edpa.org
<https://www.edpa.org>

AVAILABLE INDUSTRIAL SITE

BUTLER COUNTY INDUSTRIAL PARK



Highway 31 North, Greenville, Butler, AL, 36037

Interstate/Highway

Interstate: I-65
To Interstate (miles): 3 Mile(s)
Interstate #2:
To Interstate #2 (miles):
Highway: 10
To Highway (miles): 1.00 Mile(s)

Rail

Carrier: CSX Transportation

Electric

Provider: Pioneer Electric Co-op

Natural Gas

Provider: SE Alabama Gas District
Pressure (bars):
Size of Main: 8"

Water

Provider: Butler County Water Authority
Size of Main: 12"

Telecommunications

Provider: CenturyLink
Fiber Available: Yes
DSL Available: Yes

Sewer

Provider:
Size of Main: 8"



For more information, please contact:

Butler County Commission for Economic Development
David Hutchison
(334) 371-8400
dhutchison@bcced.com

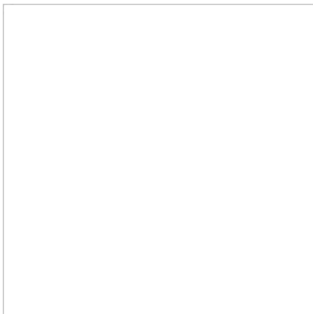
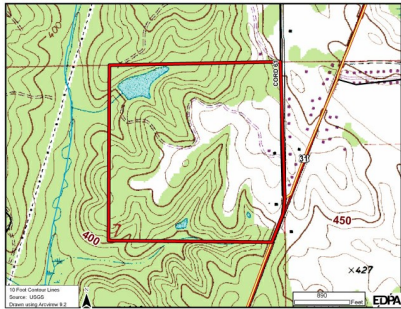
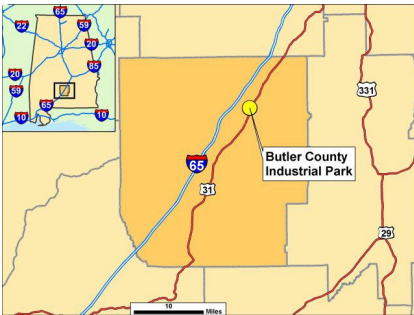
Economic Development Partnership of Alabama
1320 1st Avenue South
Birmingham, AL 35233
P 205.943.4700
gblalock@edpa.org
<https://www.edpa.org>

AVAILABLE INDUSTRIAL SITE

BUTLER COUNTY INDUSTRIAL PARK



Highway 31 North, Greenville, Butler, AL, 36037



For more information, please contact:

**Butler County Commission for Economic
Development
David Hutchison
(334) 371-8400
dhutchison@bcced.com**

**Economic Development Partnership of
Alabama
1320 1st Avenue South
Birmingham, AL 35233
P 205.943.4700
gblalock@edpa.org
<https://www.edpa.org>**